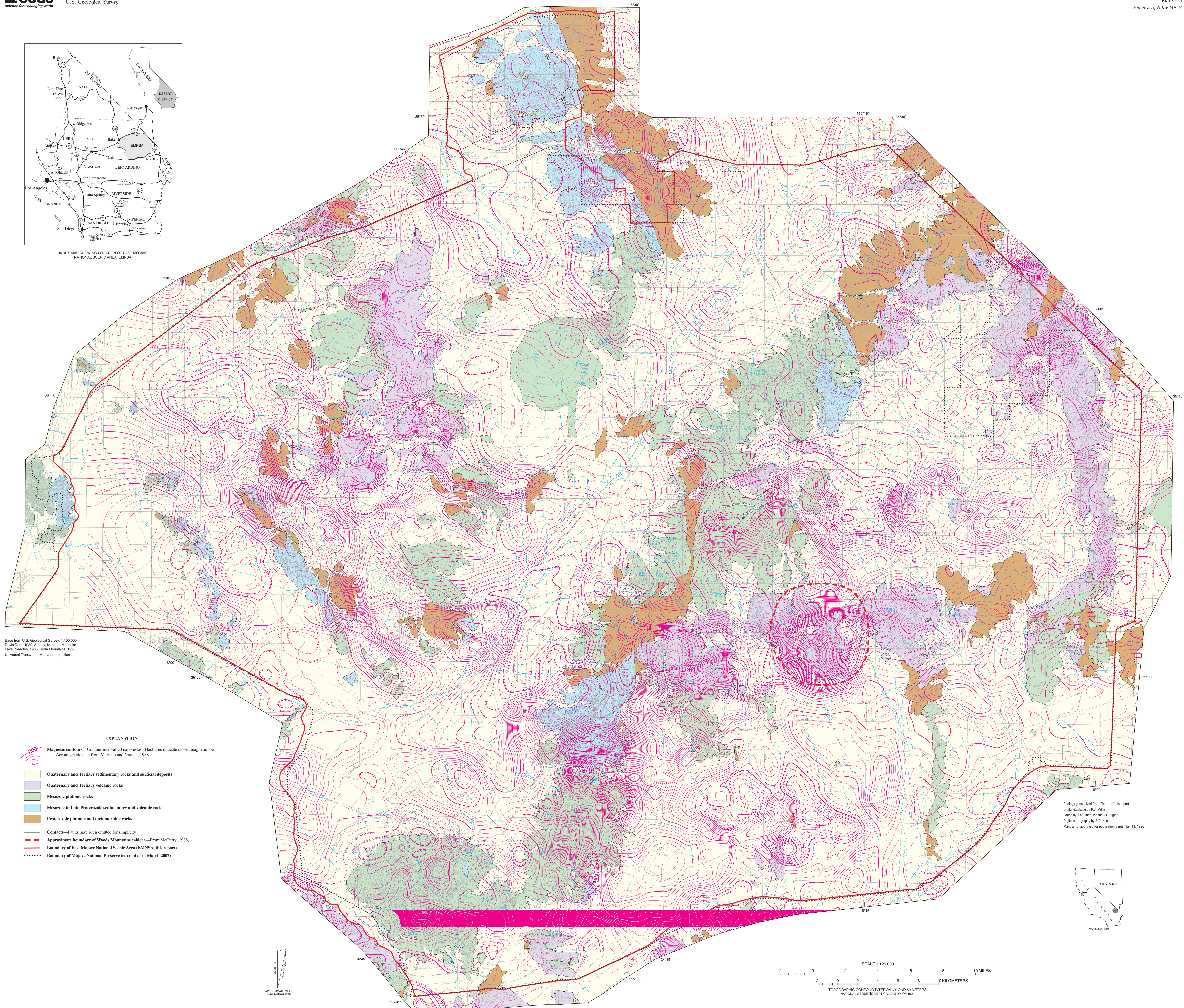


INDEX MAP SHOWING LOCATION OF EAST MOJAVE NATIONAL SCENIC AREA (EMNSA)



Base from U.S. Geological Survey 1:100,000  
Davis Dam, 1982; Arroyo, Ironspan, Mesquite  
Lake, Needles, 1985; Soda Mountains, 1989  
Universal Transverse Mercator projection

EXPLANATION

- Magnetic contours—Contour interval 20 nanotesla. Hachures indicate closed magnetic low. Aeromagnetic data from Mariano and Gracich, 1988.
- Quaternary and Tertiary sedimentary rocks and surficial deposits
- Quaternary and Tertiary volcanic rocks
- Mesozoic plutonic rocks
- Mesozoic to Late Proterozoic sedimentary and volcanic rocks
- Proterozoic plutonic and metamorphic rocks
- Contacts—Faults have been omitted for simplicity
- Approximate boundary of Woods Mountains caldera—From McCurry (1988)
- Boundary of East Mojave National Scenic Area (EMNSA, this report)
- Boundary of Mojave National Preserve (current as of March 2007)

Geology generated from Plate 1 of this report  
Digital database by R.J. Miller  
Cartography by T.A. Lindquist and J.L. Ziegler  
Digital cartography by R.D. Koch  
Manuscript approved for publication September 11, 1996



APPROXIMATE MAIN  
COORDINATE  
DECLINATION, 2007

SCALE 1:125,000  
0 2 4 6 8 10 MILES  
0 2 4 6 8 10 KILOMETERS  
TOPOGRAPHIC CONTOUR INTERVAL 30 AND 50 METERS  
NATIONAL GEODETIC VERTICAL DATUM OF 1929

**Aeromagnetic Map of the East Mojave National Scenic Area, California**  
By  
**John Mariano, Robert C. Jachens, and Robert J. Miller**

Theodore, T.O., ed., 2007. Geology and mineral resources of the East Mojave National Scenic Area, San Bernardino County, California. U.S. Geological Survey Bulletin 2160. Paper photo of plates for sale as MF-2414 from U.S. Geological Survey, Information Services, Box 25208, Federal Center, Denver, CO 80225, or call 1-888-ASK-USGS. Any use of trade, firm, or product names in this publication is for descriptive purposes only and does not imply endorsement by the U.S. Government.